

MAJOR SCALE

A scale is a series of consecutive tones moving from one tone to another. The **MAJOR SCALE** is the most commonly used scale. The major scale is a series of eight successive tones that have a pattern of whole and half steps. The major scale has a half step between the 3rd and 4th and the 7th and 8th tones of the scale. All other scale tones are a whole step apart, fig. 1.

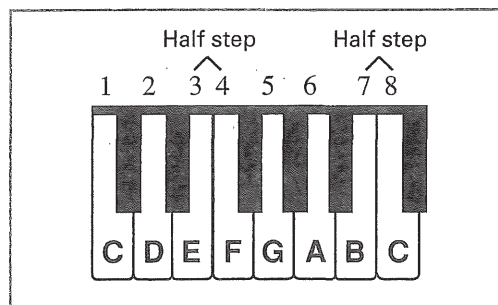


fig. 1 Keyboard analysis—C major scale

G Major Scale

In order to obtain the correct pattern of whole and half steps, an F# must be added to the **G MAJOR SCALE**, fig. 2 and 3.

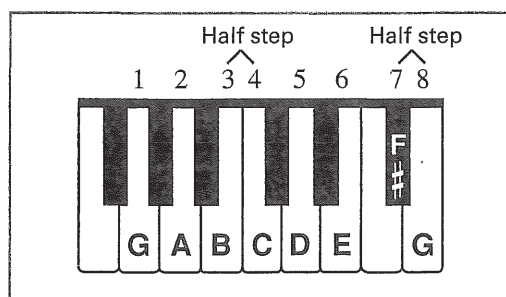


fig. 2 Keyboard analysis—G major scale

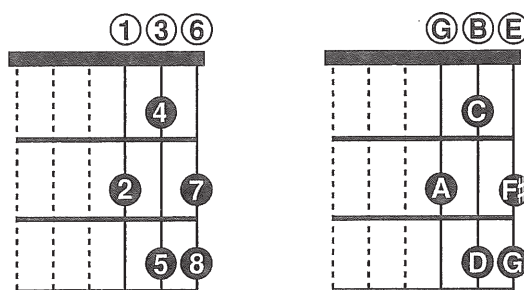
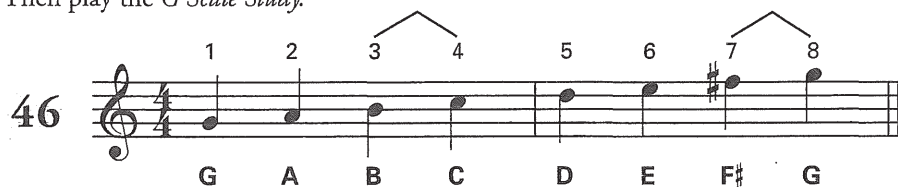


fig. 3 Fretboard analysis—G major scale

Play the G Major Scale, exercise 46. Notice the *half steps* between the 3rd and 4th and the 7th and 8th tones of the scale. Then play the *G Scale Study*.



G Scale Study

